

DEMOLITION

AND DISMANTLING

SUMMER 2011
£5 WHERE SOLD

THE JOURNAL OF THE NATIONAL FEDERATION OF DEMOLITION CONTRACTORS



NFDC LOOKS NORTH

News from the second Demolition Day



WALTERS SHOWS STEELY DETERMINATION

Felling a former steelworks



DEMOLITION COMES HOME

The EDA arrives in London

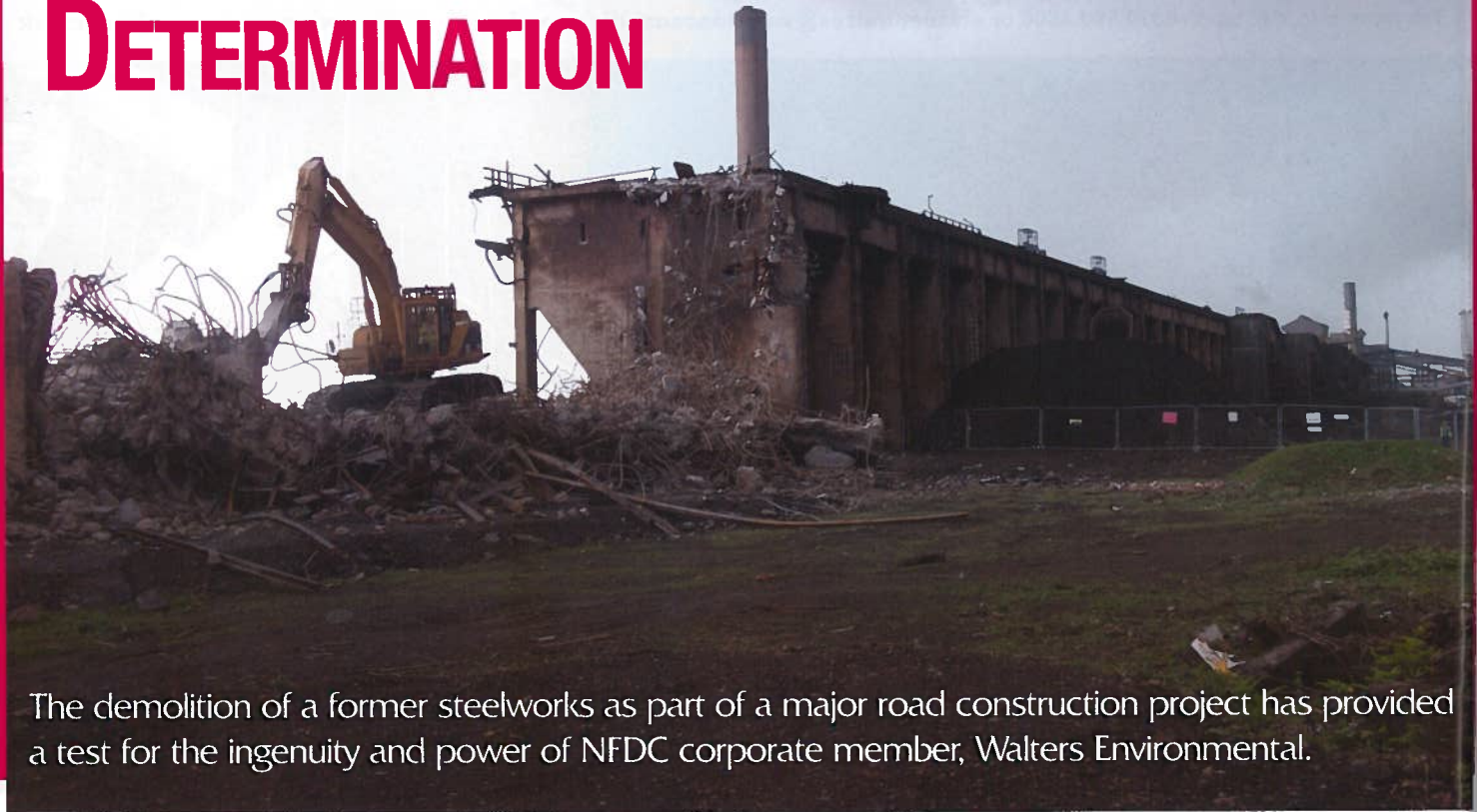
NFDC DEMOLITION DAY II

Full photo report from Manchester event

NFDC

National Federation of Demolition Contractors
The voice of the UK Demolition Industry

WALTERS SHOWS STEELY DETERMINATION



The demolition of a former steelworks as part of a major road construction project has provided a test for the ingenuity and power of NFDC corporate member, Walters Environmental.

Walters Environmental is flexing its muscles to demolish a number of redundant structures and basements that until recently formed part of the now Tata-owned steelworks plant in Port Talbot in South Wales.

The demolition contract forms part of the £107 million investment by the EU and the Welsh Assembly Government to enable the construction of Harbour Way, which will complete the Peripheral Distributor Road (PDR) in the Neath Port Talbot county borough. Harbour Way is the largest transport project to be supported by the European Regeneration Development Fund (ERDF) Convergence programme and will provide a 4.8 km link to the M4 at junction 38, serving as a vital link to West Wales, the UK motorway network, the trunk

road network and mainland Europe.

Walters Environmental is working as a subcontractor to Principal Contractor Costain Ltd with whom the company has undertaken numerous successful contracts under partnering arrangements in the past.

■ PLANT FLEET

Walters has mobilised a number of units from its extensive plant fleet of over 300 large plant items. In total, 10 items of large plant are involved in the demolition work including Caterpillar 350, 325 with High Reach demolition arm and a pair of 320 excavators, as well

as a range of Komatsu equipment including Komatsu 450, 350 and two PC240's. The plant units are operating a full range of group-owned specialist demolition attachments including Indeco 5000 and Montabert V32 and V900 hydraulic breakers and numerous hydraulic selector





grab and combi-cutter/pulveriser attachments. The demolition contract includes the pre-processing and crushing of over 15,000 m3 of demolition and other hard arisings for re-use within the works for which the Group is utilising its own Extec C12+ crusher which is being serviced by a Komatsu 350 and a Caterpillar 980 loading shovel. Walters is also responsible for the provision of demolition/refurbishment asbestos reports for each structure, and for the removal of all identified asbestos containing materials for which they are employing the services of specialist licensed and approved subcontractors. With Phase 1 of the above ground demolition works now complete, Walters is currently undertaking basement removal and earthworks activities with Phase 2 due to commence later in the summer.

■ MAJOR CHALLENGES

As Walters Environmental Demolition Project Manager Jim Webb (CCDO Demolition Manager) explained, the works involved some interesting hurdles and constraints: "As

you would expect on a site such as this, services have been a key issue and we have worked closely with Tata and Costain representatives to overcome service related problems," he says. "For example, the Afan Water Main which supplies the steelworks with much of its water intake requirements is attached to the reinforced concrete high level ore handling bunker and had to remain live throughout the demolition of a section of it. We devised a phased sequence of demolition to remove the required section of the structure to facilitate the

installation of the water main diversion pipework whilst limiting the transference of vibration to the live main and ensuring that the water supply to the steelworks was not disrupted at any time." Webb reports that air quality and dust control is also a key issue on the project. "Areas of the PDR Stage 2 Scheme are located close to one of the top 10 Air Quality Management Areas (AQMA) in the UK, with any breaches of the strict air quality targets having the potential to result in significant EU fines for the Client. We therefore implemented strict

dust control measures which included employing the services of DB60 and a DB30 Dust Boss units from WKD Dust Suppression to create a wall of ultra-fine mist around the demolition and crushing works to attract dust particles and drive them to the ground to ensure that this was never an issue in relation to our works," he explains. "As with all UK major contractors, Costain insist on the highest standards of health and safety for all site operations. We employ highly skilled and competent demolition operatives all with CCDO (Certificate of Competence for Demolition Operatives) or CPCS (Construction Plant Competence Scheme) cards with the relevant demolition category. The training needs of the company are continuously monitored with training being carried out by NDTG or their approved providers". Walters work on the site is set to continue for some considerable time to come. The road, which will trigger the regeneration of the Port Talbot docklands area, is finally due to open in the autumn of 2013.

